

# AFO 612 – Port control

## 612.1 Introduction

When a user logs in, the system must know what workstation he is using, except in case of a few specific instances. The system will try to identify the workstation immediately during login. The method used for this is determined by the host operating system and the type of network.

The following options are available.

- Logging in via a network without point-to-point connections, with coding in the workstations. In this case there is no direct line (cable) between the workstation and the computer port; the physical port address varies with each login session. However, the workstation can still be identified by issuing a characteristic unique to the system. Examples of such unique characteristics, which must be setup per workstation, are:
  - IP addresses: at login the system 'looks at' the IP address (IP = Internet Protocol) of the PC logging in. The system considers this code a logical port (/workstation) identification.
  - Auto answerback: at login the workstation sends a code (an automatic answerback), that is defined in the workstation configuration (the terminal of the PC emulation software). The system recognizes this code and considers it a logical port (/workstation) identification.
- Logging in via a network without point-to-point connections using login scripts  
If you log in via a network without fixed point-to-point connections and it is impossible to assign the workstations unique codes, you can still have workstation recognition. You must then log in using login scripts that contain information about the workstation. These login scripts are defined outside the system (for example at the network level or in the host operating system) and ensure that the system is started with special characteristics that support workstation identification. These special characteristics are thus defined in the script rather than in the workstation.

The user always logs in on a logical port, which may or may not correspond to the physical port address. You can manage these logical ports using AFO 612. The characteristics for each port are defined for this control.

Examples of port characteristics:

- the agency /location for which the port is configured;
- a (ticket) printer is associated with the workstation;

- a special application is associated with the port.

The format of a physical port differs per hardware platform.

Examples of port formats:

- /dev/ttyA/aAC (Unix)
- /dev/altcon (Unix)
- LTA1\_ (VMS)
- 192.168.160.85 (IP address, for example with Windows 95, Windows NT Workstation or Unix).

**Note!**

The start screen contains a button called 'Process Information', which gives you a survey of a number of types of data related to your process. This survey also contains the logical and physical port address for your process.

## 612.2 Control of ports

When you start AFO 612, an overview screen appears.

No.	Port	Term.	Inst./Loc	Pwd	Printer	Ind	Cash	Address
1	1	VT100	PNB/BD	-	0;	-	-	CHANGE SETTINGS!
2	2	VT100	PNB/BD	-	-	-	-	ORIGINAL
3	1972	VT100	PNB/BD	-	0;	-	-	CHANGE SETTINGS!
4	127.0.0.1	VT100	PNB/BD	-	0;	-	-	CHANGE SETTINGS!
5	134.128.123.172	VT100	PNB/BD	-	0;	-	-	CHANGE SETTINGS!
6	134.128.123.54	VT100	PNB/BD	-	0;	-	-	CHANGE SETTINGS!
7	134.128.123.70	VT100	PNB/BD	-	0;	-	-	CHANGE SETTINGS!
8	134.128.65.109	VT100	PNB/BD	-	0;	-	-	CHANGE SETTINGS!
9	134.128.65.131	VT100	PNB/BD	-	0;	-	-	CHANGE SETTINGS!
10	134.128.65.193	VT100	PNB/BD	-	0;	-	-	CHANGE SETTINGS!
11	134.128.65.213	VT100	PNB/BD	-	0;	-	-	CHANGE SETTINGS!
12	134.128.85.113	VT100	PNB/BD	-	0;	-	-	CHANGE SETTINGS!
13	134.128.85.127	VT100	PNB/BD	-	0;	-	-	CHANGE SETTINGS!
14	134.128.85.129	VT100	PNB/BRA	-	0;	-	-	Frances laptop
15	134.128.85.130	VT100	PNB/BD	-	0;	-	-	CHANGE SETTINGS!
16	134.128.85.131	VT100	PNB/BD	-	0;	-	-	CHANGE SETTINGS!
17	134.128.85.132	VT100	PNB/BD	-	0;	-	-	CHANGE SETTINGS!
18	134.128.85.136	VT100	PNB/BD	-	0;	-	-	CHANGE SETTINGS!
19	134.128.85.139	VT100	PNB/CEN	-	0;	-	-	Frances laptop nov
20	134.128.85.140	VT100	PNB/CEN	-	0;	-	-	FRKA Frances laptop
21	134.128.85.141	VT100	PNB/BD	-	0;	-	-	CHANGE SETTINGS!
22	134.128.85.144	VT100	PNB/BD	-	0;	-	-	CHANGE SETTINGS!
23	134.128.85.146	VT100	PNB/BD	-	0;	-	-	CHANGE SETTINGS!
24	134.128.85.147	VT100	PNB/BD	-	0;	-	-	CHANGE SETTINGS!
25	134.128.85.148	VT100	PNB/BD	-	0;	-	-	CHANGE SETTINGS!
26	134.128.85.153	VT100	PNB/BD	-	0;	-	-	CHANGE SETTINGS!
27	134.128.85.155	VT100	PNB/BD	-	0;	-	-	CHANGE SETTINGS!
28	134.128.85.156	VT100	PNB/BD	-	0;	-	-	CHANGE SETTINGS!
29	134.128.85.157	VT100	PNB/BD	-	0;	-	-	CHANGE SETTINGS!
30	134.128.85.169	VT100	PNB/BD	-	0;	-	-	CHANGE SETTINGS!
31	134.128.85.204	VT100	PNB/BD	-	0;	-	-	CHANGE SETTINGS!
32	134.128.99.1	VT100	PNB/BD	-	0;	-	-	CHANGE SETTINGS!
33	134.128.99.11	VT100	PNB/BD	-	0;	-	-	CHANGE SETTINGS!
34	134.128.99.12	VT100	PNB/BD	-	0;	-	-	CHANGE SETTINGS!

This screen shows a list of the (logical) ports defined within your system. This screen contains a number of the parameters to be set per logical port.

### Options on the screen

**Select no.:** Select a port and then select this option to display the data for a logical port on the screen. An overview appears with all the data for that port. The paragraph entitled **Configuring the port** explains how to modify these settings.

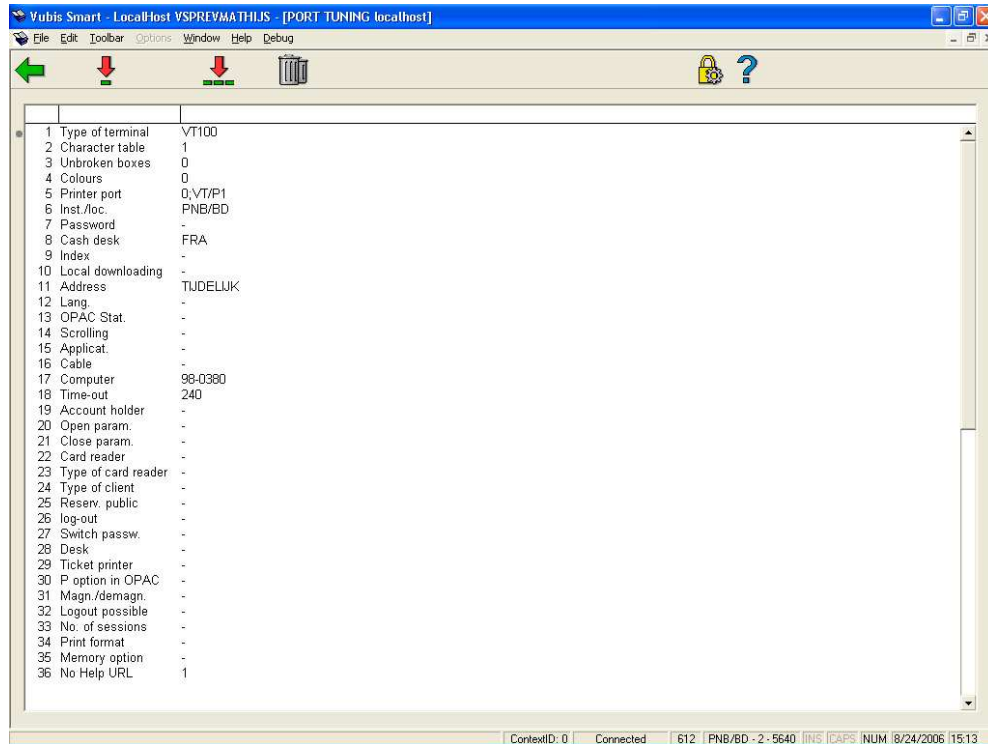
**Print port data:** Select this option to print the data for all the logical ports. Then the program switches to the standard output procedure.

**AFOs for port no.:** Select a port and then select this option to define the AFO's to which this port provides access. This option is explained in more detail in the **Access to activities** paragraph.

**Institutions for port no.:** Select a port and then select this option to define the institutions to which this port provides access. This option is explained in more detail in the **Access to other institutions** paragraph.

## 612.3 Configuring the ports

After selecting a logical port from the general screen, an overview screen appears with the particulars of the chosen port:



### Options on the screen

**Modify data (+):** Select a line number and then select this option to change the data.

**Delete port and all properties:** Select this option to delete all port data.

**Modify all data:** Select this option to change all port data. An input screen then appears in which you can change the data for the port:

Parameter	Value
Type of terminal	VT100
Character table	1
Unbroken boxes	0
Colours	0
Printer port	-
Inst./loc.	PNB/BD
Password	-
Cash desk	-
Index	-
Local downloading	-
Address	ORIGINAL
Lang.	-
OPAC Stat.	-
Scrolling	-
Applicat.	ORIGINAL
Cable	-
Computer	-
Time-out	240
Account holder	-
Open param.	-

Fields on the screen

- **Terminal type** - Enter the type of peripheral equipment to which the port in question is connected.
- Enter "VT100" in for a PC terminal;
- Enter "PRINT" for a printer;

- Enter "MODEM" for a modem.
- **Character table** - Enter "1" if no character code translation is needed. However, if a printer is connected to the port, you must enter the code for the existing character table here.
- **Unbroken boxes** - [This field is not used.]
- **Colours** - [This field is not used.]
- **Printer port** - You only need to fill in this parameter if a printer is connected to your workstation. If not, enter a minus sign ( - ). If a printer is connected to your terminal, you must enter the following two segments of the parameter; separate them with a semicolon ( ; ).
- First element in the parameter: The first element in the parameters is always "0".
- Second element in the parameter: Enter the character table being used.

#### Note

Do this only if the first element in the parameter specifies that character translation is being used. Do not include a table if no character translation is being performed.

#### Examples

```
0;          no translation
0; VT/P1    translation
```

- **Inst/location** - Enter the default setting /location for the workstation. Separate the setting and the location with a forward slash ("/") (e.g. OBG/C').
- **Password** - [This field is not used.]
- **Cash desk** - Enter the cash register to which this port is linked. This cash register must be defined in AFO 494 'Cash register administration: fixed file control' via the option 'cash register control'.
- **Index** - [This field is not used.]

- **Local downloading** - [This field is not used.]
  
- **Address** - Enter the 'address' where the workstation associated with this port is located. This 'address' may be a maximum of twenty characters.
  
- **Lang.** - Enter the default language for this port:
  - Enter "N" for Nederlands (Dutch);
  
  - Enter "E" for English;
  
  - Enter "F" for French.
  
- **OPAC Stat** [This field is not used.]
  
- **Scrolling** - [This field is not used.]
  
- **Applicat** - Specify whether a special application is linked to this port. Currently only the code "SC3M" (the 3M self-service circulation desk [SelfCheck]) is valid. The system makes a distinction between applications in capital letters and those in small letters.
  
- **Cable** - [This field is not used.]
  
- **Computer** - You can use this field to specify what computer is linked to this port. The system does not use this field. It is intended only for your administration.
  
- **Time-out** - [Field reserved for future use.]
  
- **Account holder** - [Field reserved for future use.]
  
- **Open param-** Specify whether 'open' parameters must be sent to the workstation when opening peripheral equipment connected to the workstation, such as a ticket printer, for example.
  
- **Close param** - Specify whether 'close' parameters must be sent when closing peripheral equipment connected to the workstation. Such close parameters ensure for example, that the paper is cut following printing.

- **Card reader** - Specify what card reader must be used for information received via a card reader. The card reader is identified specifying the port number to which the card reader is linked.
  
- **Type of card reader** - Specify the type of card reader linked to this port. This parameter is defined for the port to which the card reader is linked.. Valid types of card readers are:
  - "FACILITY" for a 'Facility Card' reader;
  
  - "NC2000" for a combined Chipknip and Chipper reader;
  
  - "MULTILINK" for a magnetic card reader
  
- **Type of client** - [Not applicable]
  
- **Reserv. public**[This field is not used.]
  
- **Logout** - [This field is not used.]
  
- **Switch passw** - [This field is not used.]
  
- **Desk** - Enter the 'desk' (department) where the workstation that is linked to this port is located. This parameter is only of interest for stack item request.
  
- **Ticket printer** - Enter "T" if this port has a ticket printer, for loan slips etc., attached. Alternatively, the setting "P~//server/printer" may be entered - but you should consult Support staff, as this is an unusual setting.
  
- **P option in OPAC** - [This field is not used.]
  
- **Magn/demagn.** - If a magnetizer/demagnetizer station is linked to the workstation, that can be specified here.
  - Enter "0" if no magnetizer/demagnetizer station is connected
  
  - Enter "1" if a magnetizer/demagnetizer station is connected
  
  - Enter "2" if a magnetizer/demagnetizer station is connected, but not to the printer port



- The same option as parameter 2, but specifically for DTM systems
- **Logout possible**
  - Enter “0” if the user may never log out from the language selection screen
  - Enter “1” if the user is permitted to log out from the language selection screen
- **No. of sessions** - [Option reserved for future use]
- **Print format** - [Option reserved for future use]
- **Memory option** - [Option no longer in use]
- **No Help url** - To minimize the communications bandwidth you can set this to 1. This can be useful for instance for mobile libraries, with slower communication lines. It means the server will **never** send a help-url string. Therefore online help is not available from within the application. You can create a shortcut to the helpfiles on the desktop instead.

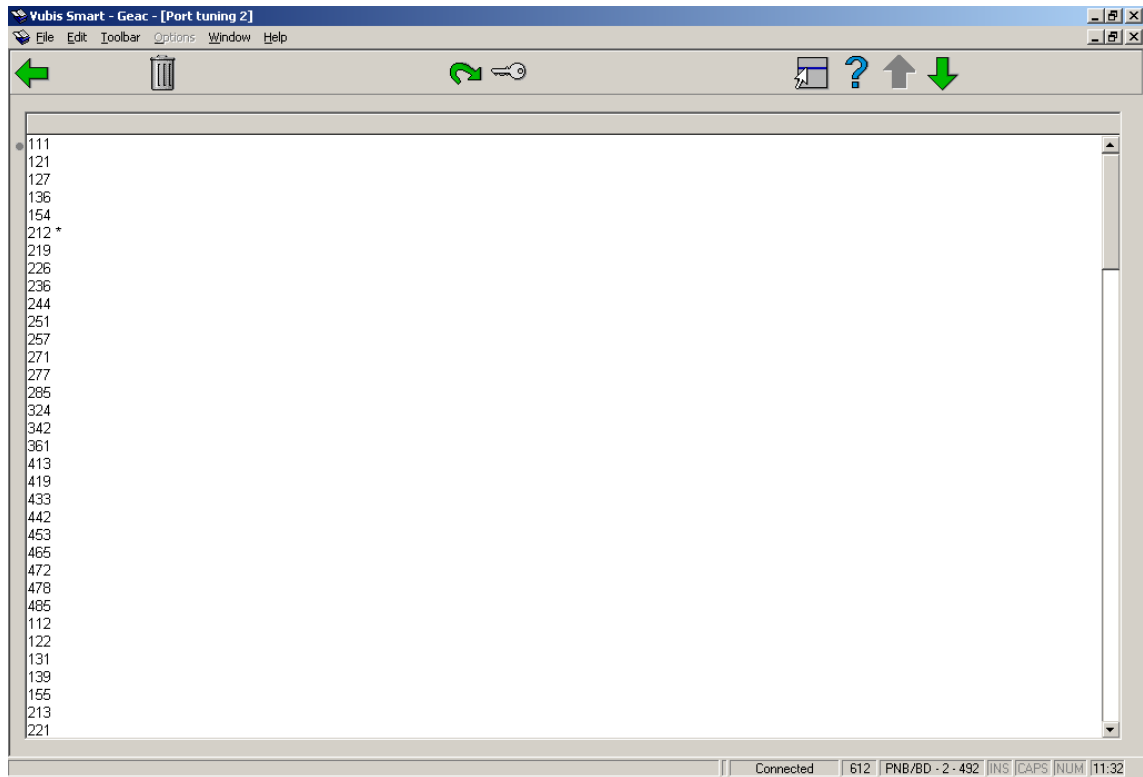
## 612.4 Access to activities

If a user (on a specific port) selects a specific activity (AFO), the settings specified here are used to check whether this is permitted. If you do not specify any activities available on a specific port, this means that all activities may be performed from this port.

The specified activities per port take precedence over the activities to which the user has access. In other words a user (who has permissions for cataloging) will receive the error message “This AFO cannot be performed on this port”, if he attempts this activity from a port from which this is not permitted.

If you select the option ‘Access to activities (+)’ from the AFO 612 start screen, an overview screen appears with AFO numbers.

The activities that are accessible are indicated by an exclamation mark (!) after the AFO number. If there is not a single activity followed by an exclamation mark, then there are no restrictions and all activities are accessible.



### Options on the screen

**Delete AFO's (+)** - Select one or more AFO's and then select this option to block these AFO's on this port.

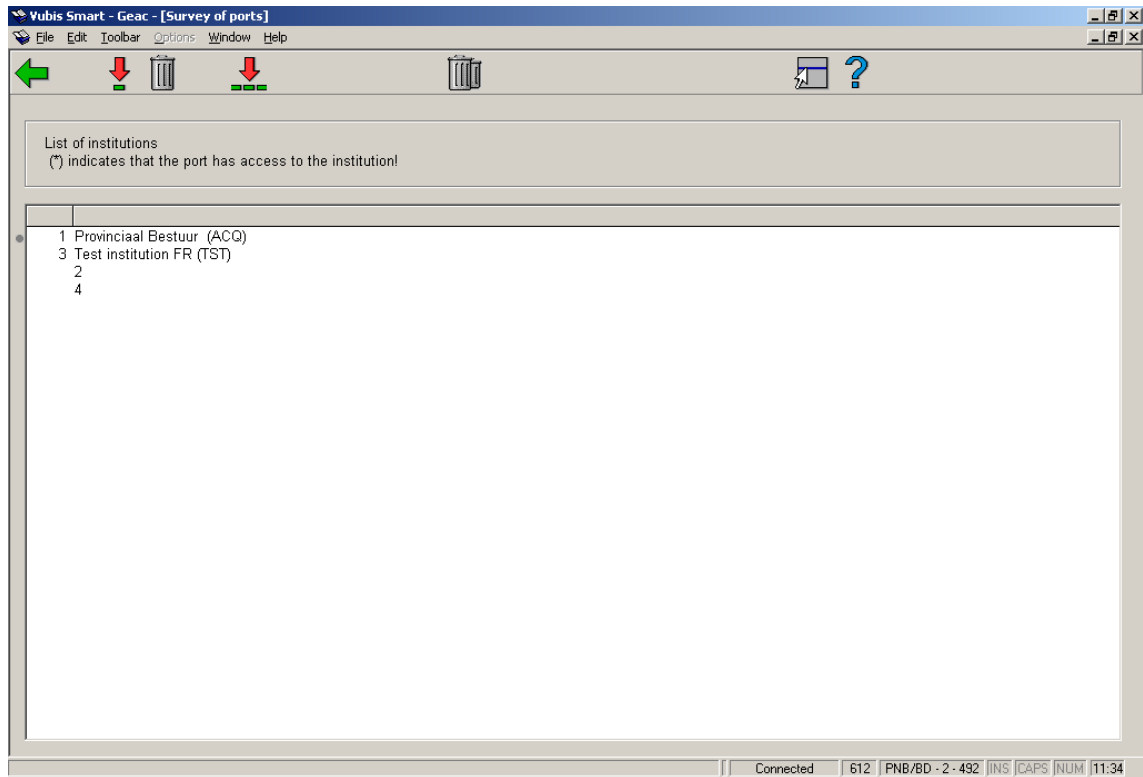
**Add AFO's (+)** - Select one or more AFO's and then select this option to make these AFO's accessible from this port.

**Add second password to AFO's (+)** - [This option is reserved for future use.]

## 612.5 Access to other institutions

If a user (on a specific port) wishes to switch to another institution, the institutions specified here are checked to verify whether such a switch is permitted. If no institutions are entered to which a specific port provides access, this means that this port may be used to log in to any institution.

If you select the option 'Access to other institutions (+)' from the AFO 612 start screen, an overview screen appears with all institutions installed on your system.



The institutions accessible from this port are indicated with an asterisk (\*). If no institution is marked with an asterisk, this means that there are no restrictions and that all institutions are accessible.

### Options on the screen

**Add institution** - Select an institution and then select this option to make that setting accessible for this port.

**Delete institution (+)** - Select an institution and then select this option to block that institution for this port.

**Choose all institutions (+)** - Select this option to make all institutions accessible for this port.

**Delete all institutions** - Select this option to block all institutions for this port.

- **Document control - Change History**

<b>Version</b>	<b>Date</b>	<b>Change description</b>	<b>Author</b>
1.0	unknown	creation	
2.0	September 2006	updates for release 2.4.1 build 17	
3.0	March 2007	amended info for ticket printer	